

Sanitrace



Sanitrace Belgie - Sanitrace Belgique - Sanitrace Belgien

Sanitrace Luxembourg - Sanitrace Luxemburg - Sanitrace Letzeburg



Copyright © 2000-2007 FAVV - AFSCA. All Rights Reserved.

This solution conforms to the standards of the EDS internet and webservice strategy and is built with the EDS.SystemLib VS2005 - release 8.2

EAI USER MANUAL

Version 1.6

May.4, 2009

Table Of Contents

Table Of Contents	2
Document History	3
Introduction	4
Schema Overview	4
Interface design conventions.....	4
Coding Schema’s Overview	5
Coding Schema’s Content.....	6
Abbreviations	9
Interface Definition	11
SlaughterFileToBeImported	11
SlaughterInfoToBeImported	15
SlaughterFileExportRequest	17
SlaughterFileExport	18
InteractionResult	20
SlaughteringFacilitiesExportRequest.....	21
SlaughteringFacilitiesExport.....	21
SlaughteringStatisticExportRequest	22
SlaughteringStatisticsOverviewExport	23
Interfaces.....	26
Overview.....	26
Web Application	27
Scenario 1. upload / download via secured web service.....	28
Scenario’s 2-4	28
Scenario 2 - upload / download via secured streaming page	29
Scenario 3 - upload / download via unsecured streaming page	29
Scenario 4 - upload / download via web page	30
Moving to Production	31
Frequently Asked Questions	31
Support.....	33

Document History

Version	Date	Change Log
1.0	May 2007	Initial Setup – pre-release version
1.1	June 17, 2007	First ‘official’ Version
1.2	Aug. 28 , 2007	Revised Version <ul style="list-style-type: none"> • Added document history • Added RICA Codes • New Functionality: Ref. Numbers not needed • New Functionality: Foreign Animals • Workflow Integration: SAV / SUBM
1.3	Sep. 7, 2007	Documentation about two extra interfaces added: one to request an overview of all active slaughterhouses over a certain period and one to request slaughter statistics over a certain period [for a certain facility]
1.4	Oct. 1, 2007	Extra examples + Frequently Asked Questions - added
1.5	Oct. 5, 2007	Frequently Asked Questions – added a few more
1.6	May 4, 2009	CTRY_CDE_ORI for ImportSlaughterfile documented – (XML Attribute added in July 2008 to allow the country of origin to be specified)

Instructions to test the interfaces:

Introduction

Schema Overview

For the Beltrace Renewal a number of interfaces have been defined for exchange of information (Definition of declarations, feedback of weights, etc...)

As there is no Industry XML-standard for this type of information, we have defined a number of dedicated schema's

Interface	Description	Result
SlaughterFileToBeImported	Interface to import slaughter file data into Beltrace (formerly called Guichet_in)	InteractionResult
SlaughterInfoToBeImported	Interface to import slaughter info data into Beltrace (formerly called Guichet_in)	InteractionResult
SlaughterFileExportRequest	Interface to request an export of slaughter data from Beltrace	SlaughterFileExport
SlaughteringFacilitiesExportRequest	Interface to request and export an overview of all active slaughterhouses over a certain period	SlaughteringFacilities Export
SlaughteringStatisticExportRequest	Interface to request slaughter statistics over a certain period [for a certain facility]	SlaughteringStatistics OverviewExport

These schema's will replace the current schema's (i.e. GUICHET_IN_V02.XSD/ GUICHET_RESPONSE_V02.XSD, GUICHET_OUT_V02.XSD, ABATTAGE_IN_V03.XSD)

Interface design conventions

The following interface design conventions were followed:

- Full Schema definition in English
- Schema names + Structure names + Steering Attributes: Camel Case, No abbreviations
- Field Names:

- Abbreviation Based
- Upper Case
- 4 character abbreviations refer to a coding schema
- Rest 3 (2) character abbreviations
- Coding Schema's optimized for 'maximal stability'
 - Coding schema's are NOT included in the schema (new codes could be added without change in the interface)
 - Minimal validation rules in the schema (no input length definitions, no mandatory fields,...) -> All business logic on the Server
 - Only standard data types: string, decimal (decimal point) , datetime
 - DateTime = YYYY-MM-DDTHH:MM:SS.FFF UCT –
 - Examples: 2007-03-01, 2007-03-01T10:04:12,

Coding Schema's Overview

SLGT	Slaughtering Type
SLKD	Slaughtering Kind
ANTP	Animal Type
ANSB	Animal SubType
ORIG	Origination
ANCO	Animal Condition
ANWF	Animal Welfare
SLST	SlaughteringStatusAction
SLPT	SlaughteringPartyType
WGHC	WeightCategory
CTRY	Country
AGEC	AgeCode
GNDR	GenderCode
HRTF	HairType
BLST	Blocking Status
RIQU	Risk Qualification

Coding Schema's Content

The codes making up the schemes are the following

SLGT	Slaughtering Type		
CIAL	Commercial Slaughter	Commerciële slachting	
PVT	Private Slaughter	Particuliere slachting	
SLKD	Slaughtering Kind		
CLASS	Classic	Normale slachting	
FSL	Forced Slaughter	Noodslachting	
ORFSL	Ordered Forced Slaughter	Noodslachting op Bevel	
ISRIT	Islamic Ritual Slaughter	Ritueel: Islamitisch	
ISOR	Islamic Ritual Ordered Slaughter	Ritueel: Islamitisch op Bevel	
JWRIT	Jewish Ritual Slaughter	Ritueel: Joods	
JWOR	Jewish Ritual Ordered Slaughter	Ritueel: Joods op Bevel	
ORSL	Ordered Slaughter	Slachting op bevel	
BRDG	Dead Delivered Breeded Game Animals Slaughter	Uitslachten dood aangevoerd gekweekt wild	
HNTG	Hunted Game Animals Slaughter	Uitslachten bejaagd vrij wild	
ANTP	Animal Type		
BOV	Bovine	Rund	
SHP	Sheep	Schaap	
GOAT	Goat	Geit	
OUNG	Odd-toed ungulate	Eenhoevig dier	
PIG	Pigs	Varken	
DEER	Deer	Hertachtigen	
WPIG	Wild Pig	Everzwijn	
LMAM	Other breded land mammal	Ander gekweekt landzoogdier	
BIRD	Bird	Loopvogel	
PLTR	Poultry	Pluimvee	
LGMPH	Lagomorph (and rodent)	Lagomorf (en knaagdieren)	
BIGG	Big Game	Grof vrij wild	
SMLG	Small Game	Klein vrij wild	
ANSB	Animal SubType		
VCALF	Vealcalf	Vleeskalf	BOV
BOV	Bovine	Rund	BOV
BIS	Bison	Bison	BOV
BUF	Buffalo	Buffel	BOV
SHP	Sheep	Schaap	SHP
GOAT	Goat	Geit	GOAT
HRSE	Horse	Paard	OUNG
DNKY	Donkey	Ezel	OUNG
PIGB	Pigs for breeding	Fokvarken	PIG
PIGF	Pigs for fattening	Vleesvarken	PIG
PIGL	Piglet	Big	PIG
OSTR	Ostrich	Struisvogel	BIRD
EMU	Emu	Emoe	BIRD
NANDU	Nandu	Nandoe	BIRD
CSWR	Cassowary	Casuaris	BIRD

PHST	Pheasant	Fazant	PLTR
GFWL	Guinea Fowl	Parelhoen	PLTR
PRTG	Partridge	Patrijs	PLTR
FCHCK	Frychicken	Braadkip	PLTR
SCHCK	Soupchicken	Soepkip	PLTR
CHICK	Chick	Kuiken	PLTR
RSTR	Rooster	Haan	PLTR
TRK	Turkey	Kalkoen	PLTR
SWN	Swane	Zwaan	PLTR
QL	Quail	Kwartel	PLTR
GSE	Goose	Gans	PLTR
PGN	Pigeon	Duif	PLTR
DUCK	Duck	Eend	PLTR
RBT	Rabbit	Konijn	LGMPH
HARE	Hare	Haas	LGMPH
RDT	Rodent	Knaagdier	LGMPH
FURB	Furbearer	Pelsdieren	LGMPH
BOAR	Wild Boar	Everzwijn	BIGG
ROE	Roe	Ree	BIGG
WDEER	Even-toed Wild Ungulate	Hert	BIGG
STAG	Stag	Damhert	BIGG
MFLN	Mufflon	Moeflon	BIGG
OTHG	Other game animal	Ander wild	BIGG
FURG	Fur game animal	Haarwild	SMLG
BIRG	Game Bird	Vederwild	SMLG
ORIG	Origination		
LOCAL	Local (Belgium)	Locaal (België)	
EU	EEC Member State	EU lidstaat	
NONEU	3rd country	3e land	
ANCO	Animal Condition		
ALIVE	Alive		
DEAD	Dead		
DDHUN	Dead by Hunting		
TCUT	Throat cut		
TCOR	Throat cut and organs removed		
ANWF	Animal Welfare		
Reserved for later usage			
SLST	SlaughteringStatusAction		
SUBM	Submit (Only the first time)		
SAV	Save (The first time and if you want to update)		
SLPT	SlaughteringPartyType		
SUB	Submitter	Aangever	
TRS	Transporter	Transporteur	
OWN	Owner	Eigenaar	
WGHC	WeightCategory		
<i>PIGS</i>			
LT25	Less Than 25 Kg	Minder dan 25 Kg	
B2513	Between 25 and 130 Kg	Tussen 25 en 130 Kg	
GE130	More than 130 Kg	Meer dan 130 Kg	
SGH			
LT12	Less than 12 Kg	Minder dan 12 Kg	

B1218	Between 12 and 18 Kg	Tussen 12 en 18 Kg
GE18	18 Kg or more	18 Kg of Meer
FOWL		
LT2	Less than 2 Kg	Minder dan 2 Kg
B25	Between 2 and 5 Kg	Tussen 2 en 5 Kg
GE5	More than 5 Kg	Meer dan 5 Kg
CTRY	Country	
...		
AGEC	AgeCode	
	Reserved for later usage	
GNDR	GenderCode	
FEM	Female	Vrouwelijk
MAL	Male	Mannelijk
UNK	Unknown	Onbekend
HRTY	HairType	
OTH	Other	Andere
BLUW	Blue White	Blauwwit
DBR	Dark Brown	Donkerbruin
G	Gray	Grijs
LBR	Light Brown	Lichtbruin
MBR	Mouse Brown	Muisbruin
R	Red	Rood
RW	Red White	Roodwit
W	White	Wit
WBL	White Blue	Witblauw
WR	White Red	Witrood
WZ	White Black	Witzwart
BL	Black	Zwart
BLW	Black White	Zwartwit
BLST	Blocking Status	
N	Normal	
B	Blocked	
S	Suspect	
RIQU	Risk Qualification	
	Codes 1 to 9	
RICA	Risk Categorization	
DISS	Disease	
RES	Residue	
DOCT	Document Type	
LOCAL	Local Reference Number	
CERT	Certificate Number	
SSD1	Slaughtering Statistic Detail 1 (All Animals)	
NOR	Normal	
FSL	Forced Slaughtering	
ADD	Arrived dead or AM rejected	
SSD2	Slaughtering Statistic Detail 2 (Bovine)	
LT18	Younger than 18 months	
GE18	18 Months or Older	
LT6	Younger than 6 months	
B612	Between 6 and 12 Months	

B1224	Between 12 and 24 Months
GE24	24 Months or Older
SSD2	Slaughtering Statistic Detail 2 (Other)
LT25	Less Than 25 Kg
GE130	More than 130 Kg
B2513	Between 25 and 130 Kg
LT12	Less than 12 Kg
B1218	Between 12 and 18 Kg
GE18	18 Kg or more
LT2	Less than 2 Kg
B25	Between 2 and 5 Kg
GE5	More than 5 Kg
SSTT	SlaughteringStatisticTotal
DFTO	Day Facility Total (over all the animals)
FATO	Facility Animal Total (over all days)
FCTO	Facility Total (over all the days and animaltypes)
SLCH	Slaughtering Chain
CH1	Chain 1
CH2	Chain 2
CH3	Chain 3
CH4	Chain 4
CH5	Chain 5
OUT	Outside the chain
BLST	Blocking Status
N	Normal
B	Blocked
S	Suspect
...	...

Abbreviations

CDE	Code
REF	Reference
NBR	Number
DEC	Declaration
SLG	Slaughtering
DTE	Date
TME	Time
BEG	Begin
END	End

FCL	Facility
WGH	Weight
LOT	Lot
ANM	Animal
CNT	Count
KG	Kilogram
NAM	Name
TPH	Telephone
RLM	Realm = Rijksregisternummer (RLM_RGS_NBR)
TRS	Transporter
AL1/AL2	Address Line 1 or 2
STR	Street
CTY	City
MCP	Municipal
EXT	External
UID	Unidentified

Interface Definition

The archive underneath contains an extract of the relevant schema's. The schema's are discussed in the further sections



Package

SlaughterFileToBeImported

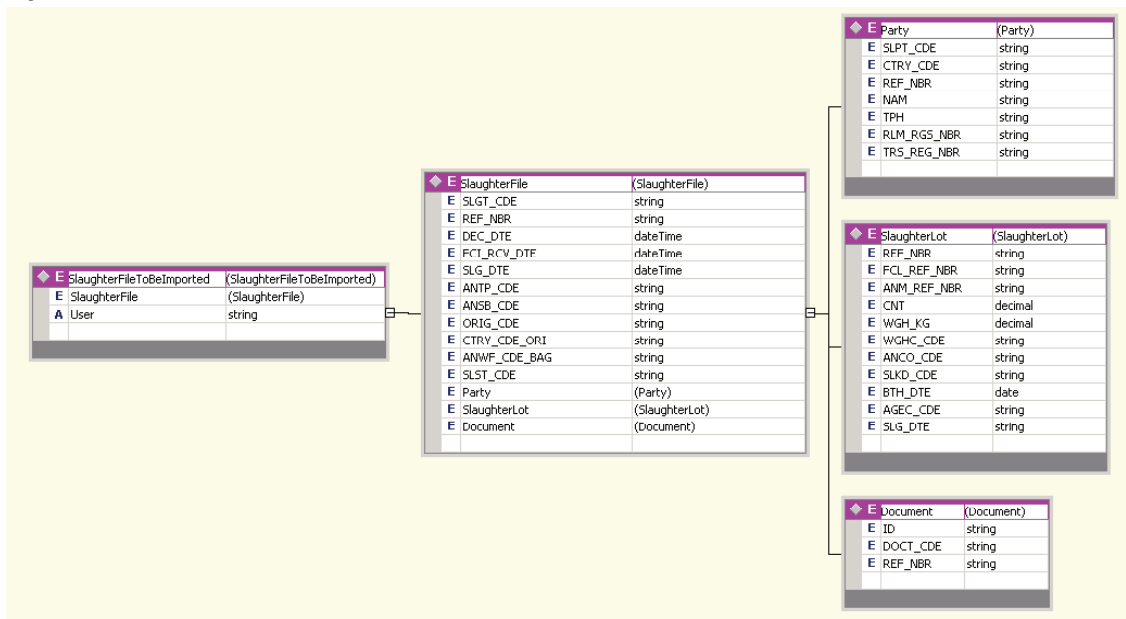
Purpose

Schema to import slaughter file data into Beltrace (formerly called Guichet_in).

In principle it is a matter of filling in the basic SlaughterFile info, the relevant parties (Submitter, Transporter, Owner) and the slaughter lots.

There also is an information element 'Documents' where a foreign document reference number (local reference or certificate) can be added.

Schema



<http://sanitel.eai/SanitelRepository/SlaughteringServices/ImportSlaughterFile/SlaughterFileToBeImported>

Example XML

Example 1 – Bovines, no File/Lot reference numbers specified, more or less minimal number of tags specified

```

<?xml version="1.0" encoding="utf-8"?>
<SlaughterFileToBelImported User="vzx5px" xmlns="http://sanitel.eai/SanitelRepository/SlaughteringServices/ImportSlaughterFile/SlaughterFileToBelImported">
<SlaughterFile>
<SLGT_CDE>CIAL</SLGT_CDE>
<REF_NBR></REF_NBR>
<DEC_DTE>2007-09-28T00:00:00</DEC_DTE>
<SLG_DTE>2007-09-28T00:00:01</SLG_DTE>
<ANTP_CDE>BOV</ANTP_CDE>
<ANSB_CDE>BOV</ANSB_CDE>
<ORIG_CDE>LOCAL</ORIG_CDE>
<ANWF_CDE_BAG></ANWF_CDE_BAG>
<SLST_CDE>SUBM</SLST_CDE>
<Party>
<SLPT_CDE>SUB</SLPT_CDE>
<REF_NBR>BE102293612</REF_NBR>
</Party>
<Party>
<SLPT_CDE>TRS</SLPT_CDE>
<REF_NBR>BE102293612</REF_NBR>
</Party>
<Party>
<SLPT_CDE>OWN</SLPT_CDE>
<REF_NBR>BE102293612</REF_NBR>
</Party>
<SlaughterLot>
<REF_NBR></REF_NBR>
<FCL_REF_NBR>BE10147385</FCL_REF_NBR>
<ANM_REF_NBR>BE55154108</ANM_REF_NBR>
<CNT>1</CNT>
<WGH_KG>0</WGH_KG>
<WGHC_CDE></WGHC_CDE>
<ANCO_CDE>ALIVE</ANCO_CDE>
<SLKD_CDE>CLASS</SLKD_CDE>
<SLG_DTE>2007-09-28T00:00:02</SLG_DTE>
</SlaughterLot>
<SlaughterLot>
<REF_NBR></REF_NBR>
<FCL_REF_NBR>BE10147385</FCL_REF_NBR>
<ANM_REF_NBR>BE87203378</ANM_REF_NBR>
<CNT>1</CNT>
<WGH_KG>0</WGH_KG>
<WGHC_CDE></WGHC_CDE>
<ANCO_CDE>ALIVE</ANCO_CDE>
<SLKD_CDE>CLASS</SLKD_CDE>
<SLG_DTE>2007-09-28T00:00:02</SLG_DTE>
</SlaughterLot>
</SlaughterFile>
</SlaughterFileToBelImported>

```

Example 2 – Pigs, File/Lot Reference numbers specified explicitly, a number of animals dead on arrival

```

<?xml version="1.0" encoding="utf-8"?>
<SlaughterFileToBelImported User="vzx5px" xmlns="http://sanitel.eai/SanitelRepository/SlaughteringServices/ImportSlaughterFile/SlaughterFileToBelImported">
<SlaughterFile>
<SLGT_CDE>CIAL</SLGT_CDE>
<REF_NBR></REF_NBR>
<DEC_DTE>2007-09-17T00:00:00</DEC_DTE>
<SLG_DTE>2007-09-17T00:00:00</SLG_DTE>
<ANTP_CDE>PIG</ANTP_CDE>
<ANSB_CDE>PIGF</ANSB_CDE>
<ORIG_CDE>LOCAL</ORIG_CDE>
<ANWF_CDE_BAG></ANWF_CDE_BAG>
<SLST_CDE>SUBM</SLST_CDE>
<Party>
<SLPT_CDE>SUB</SLPT_CDE>
<REF_NBR>BE102293612</REF_NBR>
</Party>
<Party>
<SLPT_CDE>TRS</SLPT_CDE>
<REF_NBR>BE102293612</REF_NBR>
</Party>
<Party>
<SLPT_CDE>OWN</SLPT_CDE>
<REF_NBR>BE102293612</REF_NBR>
</Party>
<SlaughterLot>
<REF_NBR></REF_NBR>
<FCL_REF_NBR>BE10048281</FCL_REF_NBR>
<ANM_REF_NBR />
<CNT>200</CNT>
<WGH_KG>0</WGH_KG>
<WGHC_CDE>B2513</WGHC_CDE>
<ANCO_CDE>ALIVE</ANCO_CDE>
<SLKD_CDE>CLASS</SLKD_CDE>
<SLG_DTE>2007-09-17T15:32:37.1875+02:00</SLG_DTE>
</SlaughterLot>
</SlaughterFile>

```

```

<REF_NBR></REF_NBR>
<FCL_REF_NBR>BE10048281</FCL_REF_NBR>
<ANM_REF_NBR />
<CNT>1</CNT>
<WGH_KG>0</WGH_KG>
<WGHC_CDE>B2513</WGHC_CDE>
<ANCO_CDE>DEAD</ANCO_CDE>
<SLKD_CDE >CLASS</SLKD_CDE>
<SLG_DTE>2007-9-17T15:32:37.1875+02:00</SLG_DTE>
</SlaughterLot>
</SlaughterFile>
</SlaughterFileToBelImported>

```

Example 3 – Pigs coming from abroad, File/Lot Reference numbers not specified, a number of animals dead on arrival, International Certificate passed as identification

```

<?xml version="1.0" encoding="utf-8"?>
<SlaughterFileToBelImported User="vzx5px" xmlns="http://sanitel.eai/SanitelRepository/SlaughteringServices/ImportSlaughterFile/SlaughterFileToBelImported">
<SlaughterFile>
<SLGT_CDE>CIAL</SLGT_CDE>
<REF_NBR></REF_NBR>
<DEC_DTE>2007-08-28T00:00:00</DEC_DTE>
<SLG_DTE>2007-08-28T00:00:00</SLG_DTE>
<ANTP_CDE>PIG</ANTP_CDE>
<ANSB_CDE>PIGF</ANSB_CDE>
<ORIG_CDE>EEC</ORIG_CDE>
<CTRY_CDE_ORI>NL</CTRY_CDE_ORI>
<ANWF_CDE_BAG></ANWF_CDE_BAG>
<SLST_CDE>SUBM</SLST_CDE>
<Party>
<SLPT_CDE>SUB</SLPT_CDE>
<REF_NBR>BE102293612</REF_NBR>
</Party>
<Party>
<SLPT_CDE>TRS</SLPT_CDE>
<REF_NBR>BE102293612</REF_NBR>
</Party>
<Party>
<SLPT_CDE>OWN</SLPT_CDE>
<REF_NBR>BE102293612</REF_NBR>
</Party>
</SlaughterLot>
<SlaughterLot>
<REF_NBR></REF_NBR>
<FCL_REF_NBR></FCL_REF_NBR>
<ANM_REF_NBR />
<CNT>200</CNT>
<WGH_KG>0</WGH_KG>
<WGHC_CDE>B2513</WGHC_CDE>
<ANCO_CDE>ALIVE</ANCO_CDE>
<SLKD_CDE >CLASS</SLKD_CDE>
<SLG_DTE>2007-08-28T15:32:37.1875+02:00</SLG_DTE>
</SlaughterLot>
</SlaughterLot>
<Document>
<DOCT_CDE>CERT</DOCT_CDE>
<REF_NBR>123455</REF_NBR>
</Document>
</SlaughterFile>
</SlaughterFileToBelImported>

```

Example 4 – Bovines coming from abroad – Slaughterfiles with numbers defined by external system

```

<?xml version="1.0"?>
<SlaughterFileToBelImported xmlns:xsi="http://www.w3.org/2001/XMLSchema-instance" xmlns:xsd="http://www.w3.org/2001/XMLSchema" User="TESTXML"
xmlns="http://sanitel.eai/SanitelRepository/SlaughteringServices/ImportSlaughterFile/SlaughterFileToBelImported">
<SlaughterFile>
<SLGT_CDE>CIAL</SLGT_CDE>
<REF_NBR>1111-0901687</REF_NBR>
<DEC_DTE>2009-05-02T07:26:49</DEC_DTE>
<FCL_RCV_DTE xsi:nil="true" />
<SLG_DTE>2009-05-02T08:26:49</SLG_DTE>
<ANTP_CDE>BOV</ANTP_CDE>
<ANSB_CDE>BOV</ANSB_CDE>

```

```

<ORIG_CDE>EU</ORIG_CDE>
<CTRY_CDE_ORI>NL</CTRY_CDE_ORI>
<ANWF_CDE_BAG />
<SLST_CDE>SUBM</SLST_CDE>
<Party>
<SLPT_CDE>SUB</SLPT_CDE>
<REF_NBR>BE12002643</REF_NBR>
</Party>
<Party>
<SLPT_CDE>TRS</SLPT_CDE>
<REF_NBR>BE12002643</REF_NBR>
</Party>
<Party>
<SLPT_CDE>OWN</SLPT_CDE>
<REF_NBR>BE12002643</REF_NBR>
</Party>
<SlaughterLot>
<REF_NBR>1111-0901687/1</REF_NBR>
<FCL_REF_NBR />
<ANM_REF_NBR>NL284315861</ANM_REF_NBR>
<CNT>1</CNT>
<WGH_KG>0</WGH_KG>
<ANCO_CDE>ALIVE</ANCO_CDE>
<SLKD_CDE>CLASS</SLKD_CDE>
<BTH_DTE>0001-01-01</BTH_DTE>
<SLG_DTE>2009-05-02T08:26:49</SLG_DTE>
</SlaughterLot>
<SlaughterLot>
<REF_NBR>1111-0901687/2</REF_NBR>
<FCL_REF_NBR />
<ANM_REF_NBR>NL465733415</ANM_REF_NBR>
<CNT>1</CNT>
<WGH_KG>0</WGH_KG>
<ANCO_CDE>ALIVE</ANCO_CDE>
<SLKD_CDE>CLASS</SLKD_CDE>
<BTH_DTE>0001-01-01</BTH_DTE>
<SLG_DTE>2009-05-02T08:26:49</SLG_DTE>
</SlaughterLot>
<Document>
<DOCT_CDE>CERT</DOCT_CDE>
<REF_NBR>6565</REF_NBR>
</Document>
</SlaughterFile>
</SlaughterFileToBeImported>

```

Empty SlaughterFile Numbers

If one does not specify a SlaughterFile Reference Number, the system will automatically generate this number and pass it back in the Interaction Result (field reference).

Obviously also for the lots, the numbers will be incremented as <Number>/1, <Number>/2, ...

To prevent an XML file without reference numbers to be registered

Foreign Animals

If the animals are imported from abroad, you need an international certificate or a local reference numbers. To register this via the XML interface you can add a document section

```

<Document>
  <DOCT_CDE>CERT</DOCT_CDE>
  <REF_NBR>123455</REF_NBR>
</Document>

```

When this section is present it is OK to leave the facility blank. I.e.

```

<FCL_REF_NBR></FCL_REF_NBR>

```

Obviously do not forget that the origin code has to be specified accordingly. E.g

```

<ORIG_CDE>EEC</ORIG_CDE>

```

Workflow Integration: SUBM or SAV

A SlaughterFile-XML can be uploaded as many times as you want if you use the Status Action “SAV”. i.e.

```
<SLST_CDE>SAV</SLST_CDE>
```

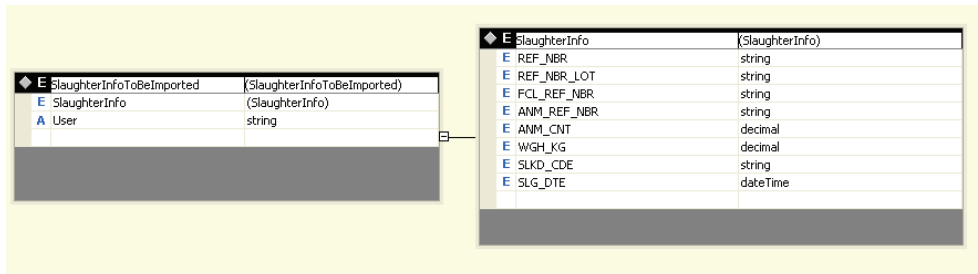
It will every time update the corresponding slaughterfile (only applicable for XMLs where you specify the Reference Number). An action “SUBM” can also be used. This action can only be done once and is actually an indication you will not update the file information anymore (obviously you still can report back the weights)

SlaughterInfoToBeImported

Purpose

Schema to import slaughter info into Beltrace (e.g. Weight, Date,...). This schema was formerly called Abattage_in). In this schema you just provide feedback on the weights. It is not necessary to group per slaughter file.

Schema



<http://sanitel.eai/SanitelRepository/SlaughteringServices/ImportSlaughterInfo/SlaughterInfoToBeImported>

Example XML

Example 4 – standard feedback

```
<?xml version="1.0" encoding="utf-8"?>
<SlaughterInfoToBeImported User="vzx5px" xmlns="http://sanitel.eai/SanitelRepository/SlaughteringServices/ImportSlaughterInfo/SlaughterInfoToBeImported">
  <SlaughterInfo>
    <REF_NBR>5564-0700016</REF_NBR>
    <REF_NBR_LOT>5564-0700016/121</REF_NBR_LOT>
    <FCL_REF_NBR>3220235</FCL_REF_NBR>
    <ANM_REF_NBR>BE17070737</ANM_REF_NBR>
    <ANM_CNT>1</ANM_CNT>
    <WGH_KG>751</WGH_KG>
    <SLKD_CDE>CLASS</SLKD_CDE>
    <SLG_DTE>2007-08-29T00:00:00</SLG_DTE>
  </SlaughterInfo>
  <SlaughterInfo>
    <REF_NBR>5564-0700016</REF_NBR>
    <REF_NBR_LOT>5564-0700016/1</REF_NBR_LOT>
    <FCL_REF_NBR>BE10048281</FCL_REF_NBR>
    <ANM_REF_NBR>BE17070736</ANM_REF_NBR>
    <ANM_CNT>1</ANM_CNT>
    <WGH_KG>749</WGH_KG>
    <SLKD_CDE>CLASS</SLKD_CDE>
    <SLG_DTE>2007-08-29T00:00:00</SLG_DTE>
  </SlaughterInfo>
</SlaughterInfoToBeImported>
```

```
</SlaughterInfo>
</SlaughterInfoToBeImported>
```

Example 5—feedback by Animal Reference Number only

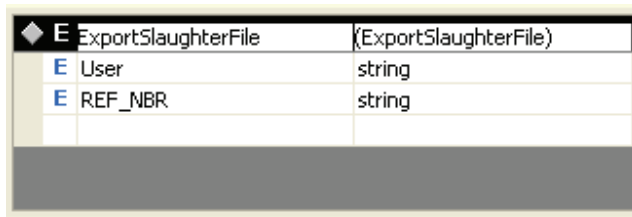
```
<?xml version="1.0" encoding="utf-8"?>
<SlaughterInfoToBeImported User="vzx5px" xmlns="http://sanitel.eai/SanitelRepository/SlaughteringServices/ImportSlaughterInfo/SlaughterInfoToBeImported">
  <SlaughterInfo>
    <REF_NBR></REF_NBR>
    <REF_NBR_LOT></REF_NBR_LOT>
    <FCL_REF_NBR></FCL_REF_NBR>
    <ANM_REF_NBR>BE87203378</ANM_REF_NBR>
    <ANM_CNT>1</ANM_CNT>
    <WGH_KG>850</WGH_KG>
    <SLKD_CDE>CLASS</SLKD_CDE>
    <SLG_DTE>2007-09-29T00:00:00</SLG_DTE>
  </SlaughterInfo>
  <SlaughterInfo>
    <REF_NBR></REF_NBR>
    <REF_NBR_LOT></REF_NBR_LOT>
    <FCL_REF_NBR></FCL_REF_NBR>
    <ANM_REF_NBR>BE55154108</ANM_REF_NBR>
    <ANM_CNT>1</ANM_CNT>
    <WGH_KG>750</WGH_KG>
    <SLKD_CDE>CLASS</SLKD_CDE>
    <SLG_DTE>2007-09-29T00:00:00</SLG_DTE>
  </SlaughterInfo>
</SlaughterInfoToBeImported>
```

SlaughterFileExportRequest

Purpose

Schema to request an export of slaughter data from Beltrace

Schema



Element Name	Element Type
ExportSlaughterFile	{ExportSlaughterFile}
User	string
REF_NBR	string

<http://sanitel.eai/SanitelRepository/SlaughteringServices/ExportSlaughter/SlaughterFileExport>

Example XML

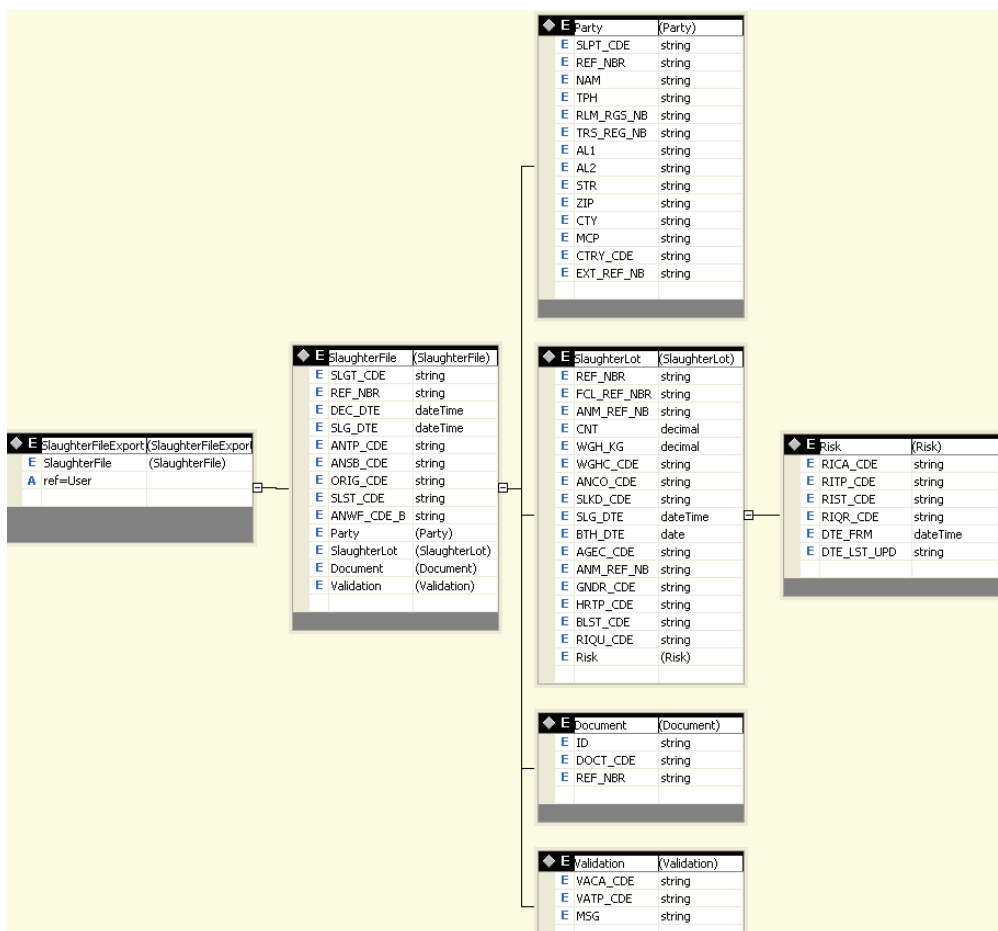
```
<?xml version="1.0" encoding="utf-8"?>  
<SlaughterFileExportRequest User="vzx5px" REF_NBR="3215-070132"  
xmlns="http://sanitel.eai/SanitelRepository/SlaughteringServices/ExportSlaughterFile/SlaughterFileExport" />
```

SlaughterFileExport

Purpose

Schema returning the contents of a certain SlaughterFile. The content is enriched with party data

Schema



<http://sanitel.eai/SanitelRepository/SlaughteringServices/ExportSlaughter/SlaughterFileExport>

Example XML

Example 6 – Export of Slaughter File info augmented with party information and risk information

```
<?xml version="1.0" encoding="utf-8"?>
<SlaughterFileExport xmlns:xsi="http://www.w3.org/2001/XMLSchema-instance" xmlns:xsd="http://www.w3.org/2001/XMLSchema" User="vzx5px">
<SlaughterFile xmlns="http://sanitel.eai/SanitelRepository/SlaughteringServices/ExportSlaughter/SlaughterFileExport">
<SLGT_CDE>CIAL</SLGT_CDE>
<REF_NBR>E564-0700016</REF_NBR>
<DEC_DTE>2007-08-23T00:00:00</DEC_DTE>
<SLG_DTE>2007-08-23T00:00:00</SLG_DTE>
```

```

<ANTP_CDE>PIG</ANTP_CDE>
<ANSB_CDE>PIGF</ANSB_CDE>
<ORIG_CDE>LOCAL</ORIG_CDE>
<SLST_CDE>NEW</SLST_CDE>
<Party>
<SLPT_CDE>SUB</SLPT_CDE>
<REF_NBR>BE500060156</REF_NBR>
<NAM>LECLERCQ BEATRICE</NAM>
<TPH>071/58.97.20</TPH>
<RLM_RGS_NBR />
<TRS_REG_NBR>Unknown Field</TRS_REG_NBR>
<AL1 />
<AL2 />
<STR>RUE LES ROUTURES</STR>
<ZIP>6500</ZIP>
<CTY>BEAUMONT</CTY>
<MCP>THIRIMONT</MCP>
<CTRY_CDE>BE</CTRY_CDE>
<EXT_REF_NBR />
</Party>
<Party>
<SLPT_CDE>TRS</SLPT_CDE>
<REF_NBR>BE500060156</REF_NBR>
<NAM>LECLERCQ BEATRICE</NAM>
<TPH>071/58.97.20</TPH>
<RLM_RGS_NBR />
<TRS_REG_NBR>Unknown Field</TRS_REG_NBR>
<AL1 />
<AL2 />
<STR>RUE LES ROUTURES</STR>
<ZIP>6500</ZIP>
<CTY>BEAUMONT</CTY>
<MCP>THIRIMONT</MCP>
<CTRY_CDE>BE</CTRY_CDE>
<EXT_REF_NBR />
</Party>
<Party>
<SLPT_CDE>OWN</SLPT_CDE>
<REF_NBR>BE500079562</REF_NBR>
<NAM>PETIT LUCIEN</NAM>
<TPH>071/58.90.07</TPH>
<RLM_RGS_NBR />
<TRS_REG_NBR>Unknown Field</TRS_REG_NBR>
<AL1 />
<AL2 />
<STR>CHAUSSEE DE MONS</STR>
<ZIP>6500</ZIP>
<CTY>BEAUMONT</CTY>
<MCP>BEAUMONT</MCP>
<CTRY_CDE>BE</CTRY_CDE>
<EXT_REF_NBR />
</Party>
<SlaughterLot>
<REF_NBR>E564-0700016/1</REF_NBR>
<FCL_REF_NBR>BE50060010</FCL_REF_NBR>
<ANM_REF_NBR>NNV9</ANM_REF_NBR>
<CNT>100</CNT>
<WGH_KG>0</WGH_KG>
<WGH_CDE>LT25</WGH_CDE>
<ANCO_CDE>ALIVE</ANCO_CDE>
<SLKD_CDE>CLASS</SLKD_CDE>
<SLG_DTE>2007-10-03T08:41:26.734375+01:00</SLG_DTE>
<BTH_DTE>0001-01-02</BTH_DTE>
<AGEC_CDE />
<ANM_REF_NBR_MHR />
<Risk>
<RICA_CDE>DISS</RICA_CDE>
<RIST_CDE>4</RIST_CDE>
<RIQR_CDE>1</RIQR_CDE>
<DTE_FRM>0001-01-01T00:00:00</DTE_FRM>
</Risk>
<Risk>
<RICA_CDE>RES</RICA_CDE>
<RIST_CDE>R00</RIST_CDE>
<DTE_FRM>0001-01-01T00:00:00</DTE_FRM>
</Risk>
</SlaughterLot>
</SlaughterFile>
</SlaughterFileExport>

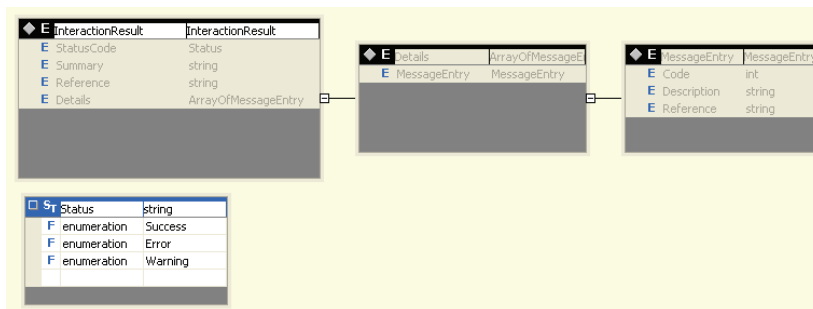
```

InteractionResult

Purpose

Schema to give feedback regarding an import of information

Schema



<http://sanitel.eai/SanitelRepository/InteractionResult>

Example XML

```
<?xml version="1.0" encoding="utf-8"?>  
<SlaughterFileExportRequest User="vzx5px" REF_NBR="3215-070132"  
xmlns="http://sanitel.eai/SanitelRepository/SlaughteringServices/ExportSlaughterFile/SlaughterFileExport" />
```

SlaughteringFacilitiesExportRequest

Purpose

Schema to request and export an overview of all active slaughterhouses over a certain period

Schema

aSlaughteringFacilitiesExportRequest	
E DTE_FRM	dateTime
E DTE_TO	dateTime
A User	string

<http://sanitel.eai/SanitelRepository/SanitelServices/ExportSlaughteringFacilities/SlaughteringFacilitiesOverviewExportRequest>

Example XML

Todo

SlaughteringFacilitiesExport

Purpose

Schema showing all active slaughterhouses over a certain period

Schema

SlaughteringFacilitiesOverviewExport (SlaughteringFacilitiesOverviewExport)	
E Facility	(Facility)
A StatusCode	string
A StatusMessage	string

Facility (Facility)	
E FCLT_REF_NBR	string

<http://sanitel.eai/SanitelRepository/SanitelServices/ExportSlaughteringFacilities/SlaughteringFacilitiesOverviewExport>

Example XML

Todo

SlaughteringStatisticExportRequest

Purpose

Schema to request slaughter statistics over a certain period [for a certain facility]. If no facility is specified, ALL slaughterstatistics are exported

Schema

aSlaughteringStatisticExportRequest		
E	DTE_FRM	dateTime
E	DTE_TO	dateTime
E	FCLT_REF_NBR	string
A	User	string

<http://sanitel.eai/SanitelRepository/SanitelServices/ExportSlaughteringStatistics/SlaughteringStatisticsOverviewExportRequest>

Example XML

Todo

SlaughteringStatisticsOverviewExport

Purpose

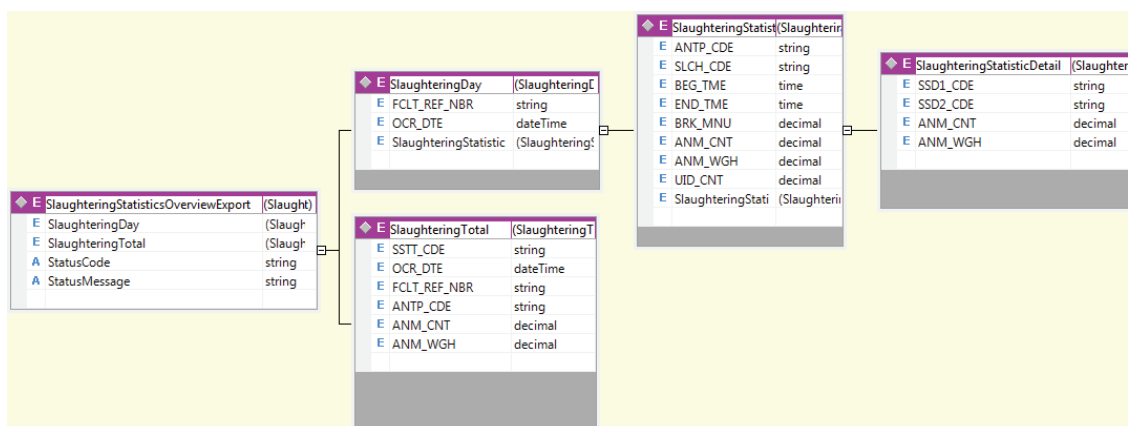
Schema to contain slaughter statistics. An export contains the statistics per Facility per Day and some summary statistics.

The statistics per Facility per Day are further broken down per Slaughtering Chain. For Bovines there is a further breakdown per SlaughteringKind /AgeCategory. For other animals the further breakdown is per Slaughtering Kind /WeightCategory. (See CodeGroups SSD1, SSD2 above)

Not all summary statistics make sense. The export limits itself to the following summary statistics :

SSTT_CDE	Description	SLG_DAY/ OCR_DTE	SLG_DAY/ FCLT_REF_NBR	SLG_DAY/ SLG_STS/ ANTP_CDE
DFTO	Day Facility Total (over all the animals)	x	x	
FATO	Facility Animal Total (over all days)		x	x
FCTO	Facility Total (over all the days and animaltypes)		x	

Schema



`http://sanitel.eai/SanitelRepository/SanitelServices/ExportSlaughteringStatistics/SlaughteringStatisticsOverviewExportRequest`

Example XML

Todo

Interfaces

Overview

We have implemented the interfaces in 4 ways:

1. upload / download via secured web service
2. upload / download via secured streaming page
3. upload / download via unsecured streaming page
4. upload / download via web page

The use of communication channel 1 requires that your technical environment can handle web services. It is the long term integration vision. Future services will only be made available via this channel

Communication channel 2 is a streaming channel similar to the one that is used in today's communication. However in this channel some basic security is introduced. In the long term it is the 'minimally acceptable' communication channel.

Communication channels 3 and 4 are similar to the current way of working and as such do not have any technical or infrastructural impact.

So in total there are 12 Interface channels. The diagram underneath illustrates this

Channel \ Interface	Manual	Unsecured Streaming	Secured Streaming	Web Service
Import Slaughter File	X	[X]	X	X
Export Slaughter File	X	[X]	X	X
Import Slaughter Weight	X	[X]	X	X

[X] might be discontinued in the long term

Web Application

The online application for testing can be accessed via

- http://qas.sanitrace.be/web/QAS_Sanitel_Web/Pages/Common/Default.aspx

In principle you should log in with your user name, or you can subscribe your self and send us a mail to give you proper rights.

You can optionally use the special account TESTXML with password ED5R0CK5 (with a zero). However, this account is hooked up to the Slaughtering house in Mechelen – so all imports and exports will show up in their overviews.

Please consider the draft user manual discussing the online application, general working, registering accounts, updating your profile, registering issues, etc. The manual also contains a description on how to create a slaughter-file in the online.

Please start creating one slaughter file manually. You will see that a slaughter file has a reference code format PPPP-NNNNNNN (e.g. under TESTXML for example file 1014-070008). It is important that your reference numbers also start with the prefixes relevant for your slaughter house. If not you might get conflicts with other slaughterhouses trying to use the same slaughter file references...

A basic manual on how to use the online web application can be found in

Scenario 1. upload / download via secured web service

The web services can be access via

http://qas.sanitrace.be/int/QAS_Sanitel_ExtInterfacingSvcs/SlaughteringServices.asmx

This site is secured you need to enter the following credentials:

User: WS4SNTRC

Password: ed5R#CK5

The zip file underneath gives an example on how to make calls to the Web Service



Package

When using a tool to discover this web service, the XSD-structures defined above are available as stubs in your application

Scenario's 2-4

The zip file underneath contains some example XML files these can be used by all subsequent scenario's as these work with pure XML files rather than Web Services. Obviously the XML's are formed according to the schema's defined above.



Package

Scenario 2 - upload / download via secured streaming page

SlaughterFile and SlaughterInfo XML files to be imported can be streamed to the following secured page

http://qas.sanitrac.be/int/QAS_Sanitel_ExtInterfacingSvcs/ImportSlaughterFile/ImportSlaughterFileService.ashx
http://qas.sanitrac.be/int/QAS_Sanitel_ExtInterfacingSvcs/ImportSlaughterInfo/ImportSlaughterInfoService.ashx

A Slaughter file export request can be send via streaming via the following secured page

http://qas.sanitrac.be/int/QAS_Sanitel_ExtInterfacingSvcs/ExportSlaughterFile/ExportSlaughterFileService.ashx

To access the pages you need to enter the following credentials:

User: WS4SNTRC

Password: ed5R#CK5

The code underneath gives an example on how to use this secured interface



Package

Scenario 3 - upload / download via unsecured streaming page

XML import files can be streamed to the following page

http://qas.sanitrac.be/web/QAS_Sanitel_Web/Interfacing/ImportSlaughterFile/ImportSlaughterFileService.ashx
http://qas.sanitrac.be/web/QAS_Sanitel_Web/Interfacing/ImportSlaughterInfo/ImportSlaughterInfoService.ashx

a Slaughter file export can be fetched via streaming via the following secured page

http://qas.sanitrac.be/web/QAS_Sanitel_Web/Interfacing/ExportSlaughterFile/ExportSlaughterFileService.ashx

The code in scenario 2 can be used. Just replace the URL as mentioned above and delete user name and password

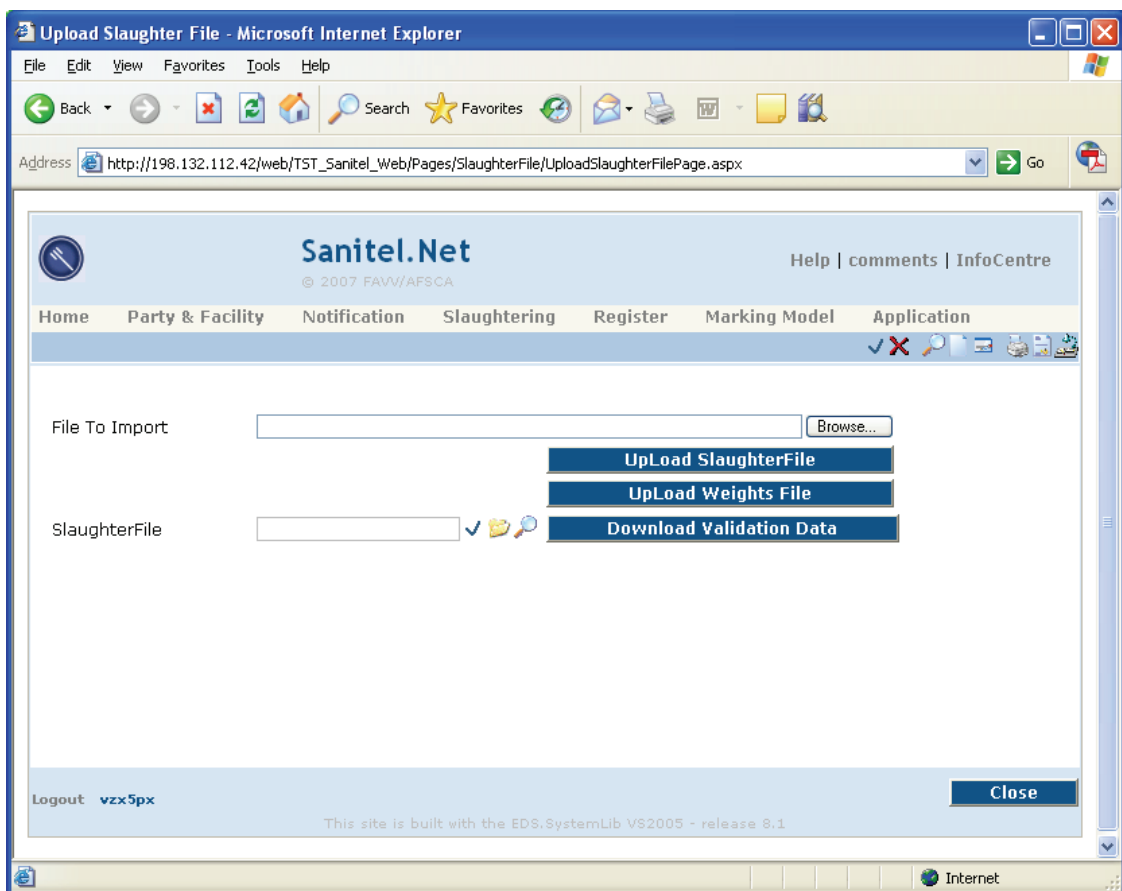
Scenario 4 - upload / download via web page

After selecting the menu option
Manual Upload

Or by entering the URL

http://qas.sanitrace.be/web/QAS_Sanitel_Web/Pages/SlaughterFile/UploadSlaughterFilePage.aspx

You get to the manual upload page which is rather straight forward



where you can test whether your xml is correctly filled in.

In case your streaming does not work or give satisfactory results please test it first using the manual scenario.

Moving to Production

All URLs specified contain the word QAS at least once in the URL. For production all of the above will remain the same, except that the characters qas or QAS need to be replaced by prd or PRD. Another change which is envisioned is running under https rather than under http – to prevent the (unlikely) situation where a hacker would capture the password of an XML interchange between non-Windows based servers and the Sanitrace Windows-based Servers

Frequently Asked Questions

1. Q: Can we still use the old Sanitel/Beltrace numbers?
A: Yes you can, however there is still a small change. The new Beltrace/Sanitrace makes the difference between Liable Party and Facility more explicitly. E.g. Transporters, Submitters and Owners refer to Parties. Farms where the animals come from refer to facilities. However sometimes a farmer is also the submitter or transporter. So you should know his party number and his facility number. To minimize the effort needed, the application accepts the facility number as a party number too. However in the export of data the correct numbers will be used.
2. Q: What about foreign transporters, or private persons? Are they in the system?
A: The best way is to first have a look in the system (search by name, realm register number,...), and if they are not there, create a new party using “Simple Party Maintenance” – the party than generated will have an S000XXXX number and this number can be permanently used for referring to this party.
3. Q: A few of these persons already have a 9-digit zero prefixed FAVV BOOD / KBO number. Can I use that number?
A: Unfortunately it is not possible to use this number (yet) as in the Sanitel application there still can be multiple parties linked to the same FAVV BOOD / KBO number. However, you can search on this 9-digit zero prefixed number too for finding the party, and in case it is not there you can fetch its BOOD / KBO information when creating the party (i.e. create simple party maintenance > tab to field external reference number -> enter the 9-digit zero prefixed FAVV BOOD / KBO number -> Hit the check button -> Name + address info is fetched...
4. Q: And foreign cattle farms – should we create those too?
A: No, in the XML –structure there is the document tag where you can specify the certificates of these foreign cattle farms. Both local or international (TRASYS) certificates can be used.
5. Q: What is the difference between a Party and a Facility?
A: The Party is the Juridical entity and is in the process of being rationalized and aligned with the Central KBO registration, the Facility is the more down-to-earth number of a certain ‘facility’ on a certain ‘location’. One party can be responsible for multiple facilities but a facility only has one liable party...
6. Q: Can we register now multiple transporters via the XML
A: Yes you can, just an extra Party Tage with SLPT_CDE-code = ‘TRS’
7. Q: Can we now register dead animals via the XML

- A: Yes you can See example 2
8. Q: Can we put local animals and foreign animals in one SlaughterFile
A: No, you can not. The origin code (ORIG_CDE) has to be filled in on SlaughterFile level and indicates if the animals come from abroad or local. So you need to split the declaration
9. Q: I get PATY_CDE mandatory FCLT_CDE mandatory messages. What do they mean?
A: I agree the error messages are not always optimal – but it typically refers to not specified or incorrectly specified parties (Submittor, Owner, Transporter) or facilities. Please check whether your specified codes are filled in and are in the correct format (BE12345678)
10. Q: I just use trial and error and sometimes the messages are somewhat hard to understand. Is there a possible overview of all that can go wrong? What other messages are there?
A: I agree the error messages are not always optimal, and unfortunately I do not have an exhaustive list of all possible errors you can make when doing trial and error XML filling, but it is a point where we try to improve continuously. The most visible error checking is on the possible code-value schema's and mandatory fields, but excessive field lengths or duplicate keys can result in less user friendly messages... On the other hand this is not an online application, but a data-interchange protocol with 'trusted party' applications – so we do can assume some basic validation at the input side ;-)
11. Q: What's the difference between SAV (Saving) and SUBM (Submitting) a declaration? As soon as you SUBM it a declaration, it is the signal that the inspections can take place and it cannot be altered anymore. When SAVing a declaration you can do an update later (e.g. if you want to change weight categories or so...) However a manual or XML – SUBM-it is needed to progress the workflow.
12. Q: Is there a manual of the online application? Where can I get them?
A: There are three manuals: The EAI Manual (this one – in English only), a getting started manual with general application navigation tips (In Dutch and French) and a functional manual for the Slaughtering functionality (Also in Dutch and French). In total these manuals add up to over 10 MB so they cannot be easily send around. The manuals are distributed during the training and FAVV-AFSCA will be making them available via the web site too. You can find all animals by clicking the info-centre link on the top-right side of the application screens
13. Q: What integration scenario is preferred?
A: As described above both scenario's 1 and 2 (Web Service and Secured Streaming) are the preferred ones. The Web Service has one additional advantage and that is that a local 'object structure' can be created rather than working with the XML itself. The Streaming has the advantage that you can use scenario 4 to test your stuff first...
14. Q: What username do we use in the XML? How do I get a logon? What if I am a systems integrator and not e.g. a Slaughterhouse?
A: You can use any logon of this Slaughterhouse as long as they exist in the application? Contact the general helpdesk for a user id. If you re a system

integrator ask a Logon ID in the QAS-environment and have it configured for one of the slaughterhouses you work for. Please inform the slaughterhouse about this...

Support

Online VIA http://qas.sanitrace.be/web/QAS_Sanitel_Web/Pages/Issue/IssueMaintenancePage.aspx

General Helpdesk: Dirk Van Schoor (02 / 2083811)
Technical EAI Issues: Kurt Wayenberg (02 / 208 32 30)
Functional Issues: Diederik Degryse (02 / 208 32 23)
All other Issues: Hans Wuyts (02 / 208 32 22)